



jordan fishwick

WEST DIDSBURY
Barlow Moor Road



Barlow Moor Road, West Didsbury, M20 2PW

£1,850 Per Calendar Month



The Property

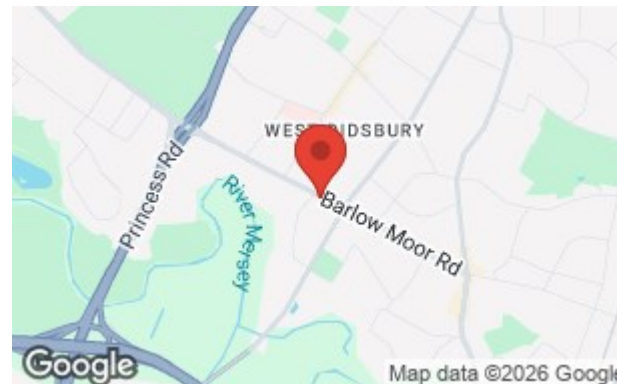
*** AVAILABLE NOW *** Jordan Fishwick are pleased to offer this outstanding two double bedroom ground floor apartment, this impressive apartment is located on a sought after award winning development ' Woods End'. Furnished to very good specification, the apartment comprises ; - Private hallway, separate W.C, large open plan lounge with patio doors leading to an extensive private decking & garden, stunning kitchen with full range of integrated appliances. Two double bedrooms with both benefitting with en-suite bathrooms and the master housing patio doors to the decked area. Features include underfloor heating, electric blinds, granite work surfaces and parking for two cars - with one space being in the secure underground carpark. Furnished as per the photos. To view please contact our Didsbury office.

View our Virtual Tour Here - <https://youtu.be/ac8c4vSLyzw>

EPC Rating - C // Council Tax Band F

Directions

M20 2PW



- Available March
- Two Double Bedrooms
- Two En-suites
- Modern Design Throughout
- Underfloor Heating
- White Goods Included
- Two Parking Spaces
- Fully Furnished
- Council Tax Band F
- EPC Rating C

Postcode - M20 2PW

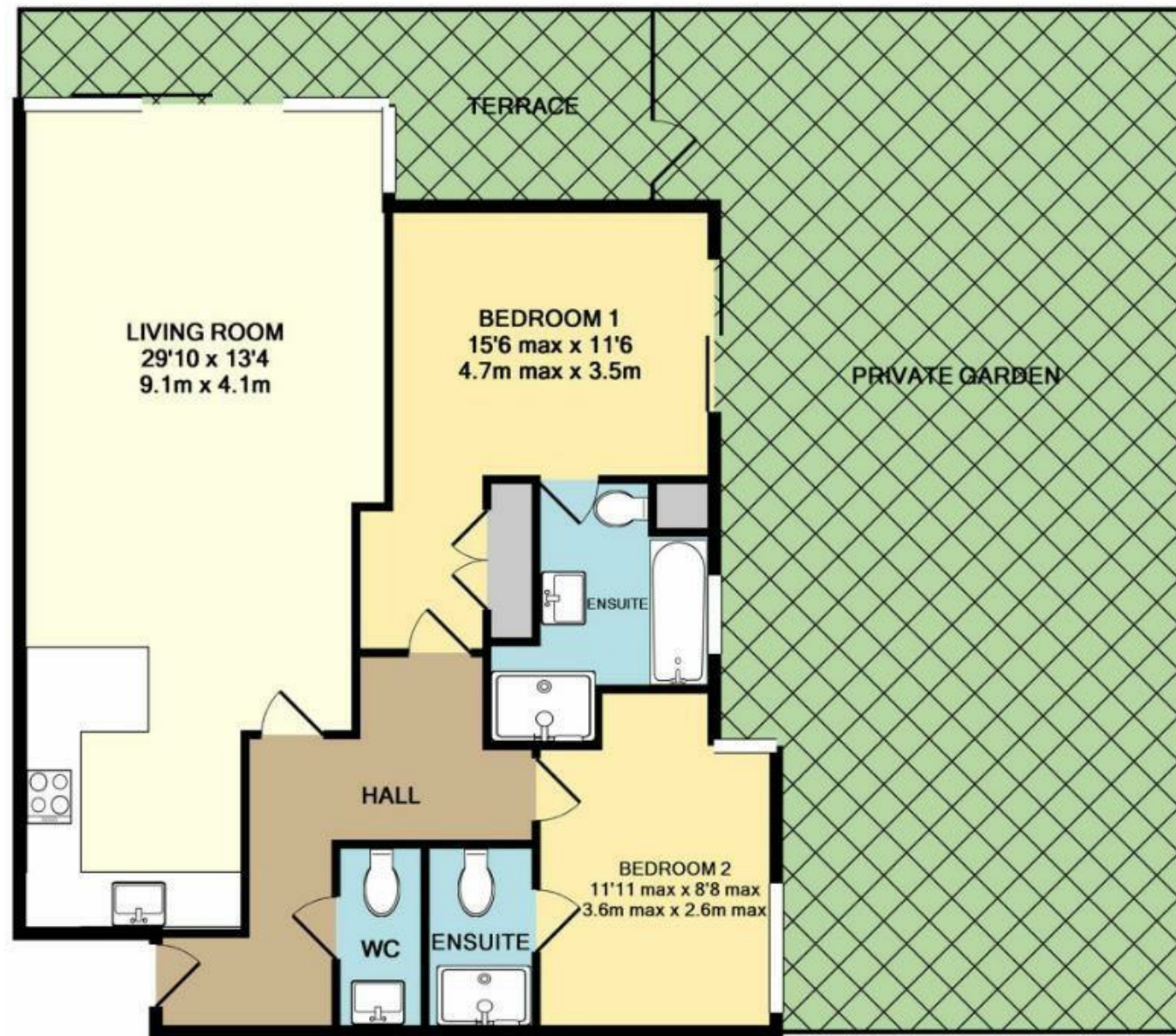
EPC Rating - C

Floor Area - sq ft

Local Authority - Manchester

Council Tax - F





These particulars are believed to be accurate but they are not guaranteed and do not form a contract. Neither Jordan Fishwick nor the vendor or lessor accept any responsibility in respect of these particulars, which are not intended to be statements or representations of fact and any intending purchaser or lessee must satisfy himself by inspection or otherwise as to the correctness of each of the statements contained in these particulars. Any floorplans on this brochure are for illustrative purposes only and are not necessarily to scale.

Offices also at: Wilmslow, Macclesfield, Hale, Sale, Chorlton, Glossop, Manchester & Salford

757-759 Wilmslow Road, Didsbury Village, Manchester

0161 445 4480

didsbury@jordanfishwick.co.uk
www.jordanfishwick.co.uk